

# COTSWOLD ECO TUBS

RELAX, REPLENISH, REVIVE



## Hand-crafted, luxury wooden hot tubs

1.5 HOUR  
HEAT UP



UNRIVALLED  
QUALITY &  
CUSTOMER  
SERVICE



LED LIGHTS  
& BUBBLES



The UK's No.1 Wood-Fired Hot Tub Brand





# Time to relax

---

Our hot tubs are made for carefree relaxation and offer a break from the stresses and strains of everyday life.

Step into your very own paradise and allow your body to be soothed and your mind to unwind, combined with the captivating crackle of wood. Perfect enjoyed with your family, on your own or for socialising with friends. Spoil your body with a healing and invigorating massage.

Atmospheric underwater LED lighting will also help you to unwind, turning your spa into an oasis of beautiful colours.

When the experience of warmth, bubbles, light and colour is combined with the sweet aromas of wood fire fragrances your Eco Tub will truly offer a sanctuary of relaxation for all the senses.

“Absolutely first class team and a beautiful eco tub! From start to finish the team at Cotswold were amazing. Great communication, wonderful customer service and always keen to be in touch and make sure everything is the way it should be.

I love my eco tub! It looks gorgeous, it's so easy to use and amazingly, wonderfully luxurious addition to my garden.”



# RELAX, REPLENISH, REVIVE

At Cotswold Eco Tubs we understand that for you to invest in your own Eco Tub, our products must be sustainable, convenient and an effortless escape from the pressures of modern life. All of our models are built to the same incredible specification. Here are just a few ways in which your Eco Tub will tick all of those boxes...



## Easy to install

All tubs are delivered fully assembled, ready to use within minutes. Once in place, simply fit the chimney and **chimney guard** - a quick two-minute job & decide where to put your **drinks holder**. Carefully packaged for easy delivery, we've even installed Eco Tubs in some remarkably remote locations.

---



## Eco friendly

We pride ourselves on being one of the most eco-friendly and luxury hot tub manufacturers within the UK. All our wood cladding for the tubs comes from **sustainable sources**. The benefit of a wood burning stove, is that wood is a renewable and sustainable fuel source. When wood burns it releases no more CO<sub>2</sub> than it would if it were left to rot, which makes this a carbon neutral fuel.

---



## Swift heat up

With heat up times averaging at an amazing 1.5-2 hours, for our wood-fired tubs, why would you look at any other option for your hot tub? Our **insulated covers** increase heat retention by around 30% so, by simply replacing the lid after use, you are able to retain the heat ready for an even quicker heat up time tomorrow.

---



## Quiet

Enjoy your Cotswold Eco Tub peacefully - our bubble systems are some of the **quietest on the market**.

---



## Energy Efficient

A wood-fired boiler means that electricity is only required for **bubbles & LED lighting**. Meaning a minimal usage of electricity with just 240v power supply required! Our electrically powered & hybrid tubs are also designed to be economical without compromising on luxury.

---



## Hard-wearing

Your Cotswold Eco Tub is built to last. Our design of robust exterior cladding and premium **American Acrylic** interiors mean many years of reliable service. Our boilers are constructed using marine **grade 316 stainless steel**. Most competitors use thin fibreglass or a lower grade steel for the boilers - compromising on longevity.

---



“People buy from People... I have found dealing with the team at Cotswold Eco Tubs great. But ultimately, it’s the product that is key and that is where they excel. It is clearly well thought out and the team seem passionate about what they have created.”



### Hygienic

The smooth interiors are specifically designed for ease of cleaning and allows for only the highest levels of hygiene. Our range come complete with **filter connections** allowing you to easily fit a filter in the future!

---



### Comfortable

Designed so that users are in a comfortable, seated position. Our tubs allow for users to immerse their shoulders without lying down – perfect for enjoying your Eco Tub all year round including as a plunge pool in summer! Complete with **headrests** for that extra ‘splash’ of luxury!

---



### Stylish

With a range of interior & exterior colour finishes, your Eco Tub will be hand-made just for you. Our sleek insulated covers ensure that even when not in use your tub looks attractive, stylish and at home in any garden or environment.

---



### Affordable

With our focus firmly on value, we continually strive to offer the best products, advice, and sales support for the best price possible – without ever compromising on quality. Our pricing structures include everything you need with **no hidden pricing**.

---

# Your very own oasis

## Our range of wood-fired Eco Tubs

Our wood-fired Eco Tubs average at just 1.5 hour heat up\* & require less than £6\* per fuel per evening (and of course, no cost when not in use).



### THE GLYME 2 PERSON

The ideal tub for those with less space who don't want to compromise on luxury. Available in both Air Bubble or Hydro (Water) Jet systems.

LENGTH 190CM / WIDTH 120CM /  
HEIGHT 103CM



### THE BURFORD 6 PERSON

A popular choice for many, the Burford offers ample space for families to relax and enjoy, as well as for couples who simply want a little extra room! Available in both Air Bubble or Hydro (Water) Jet systems.

DIAMETER: 205CM /  
HEIGHT: 115CM



### THE KINGHAM 5 PERSON

A mid-size Eco Tub featuring a beautiful circle within a 'squircle' moulding. Comes with a combined Air bubble and Hydro (water) Jet system & Supreme Wood Storage Steps.

LENGTH 205CM / WIDTH 205CM /  
HEIGHT 100CM



### THE WINCHCOMBE 9 PERSON

One of the biggest tubs on the market, perfect for those who like to stretch out or entertain. Available in both Air Bubble or Hydro (Water) Jet versions.

DIAMETER 225CM /  
HEIGHT 110CM



### The best of both worlds

Optional electric heaters can be added to create a hybrid system - use wood to heat the tub and a small amount of electricity to maintain the temperature. All models are filter-ready, allowing you to keep the same water for longer. Enjoy the convenience of an electric tub, the power of wood-fired heating, and a design that complements your garden.



### THE BLENHEIM 5 OR 7 PERSON

This Hybrid Eco Tub is designed for those who desire the cost effectiveness of wood burning but value the added convenience of electricity to maintain a constant temperature. Comes with a Hydro (Water) Jet system & integrated Cartridge Filter.

DIAMETER 205CM OR 225CM /  
HEIGHT 110CM



### THE MORETON 7/10 PERSON

Arguably one of the most luxury wood burning tubs on the market, this spacious tub is designed for those of us who simply want everything. Comes with a combined Air bubble and Hydro (Water) Jet system.

LENGTH 225CM / WIDTH 225CM /  
HEIGHT 110CM



# Introducing our electric options

Now an electric tub can be as beautiful as it is powerful



### THE WILDERNESS 2 PERSON

Fully stainless steel lined, designed for relaxation & recovery. Complete with an electric heater - immerse in temperatures from 3 degrees up to 40. Also available in a wood-fired version for those seeking hot & cold therapy off-grid.

LENGTH 200 CM / WIDTH 90CM /  
HEIGHT 80CM



### THE CHARLBURY 5 OR 7 PERSON

A fully electric spa built with the same Nordic aesthetic as our traditional wood-fired tubs. Includes app capabilities - control your tub on the go! Comes with a combined Air bubble and Hydro (Water) Jet system and integrated cartridge & UV filter - killing 99.9% of bacteria!

DIAMETER 205CM OR 225CM /  
HEIGHT 110CM

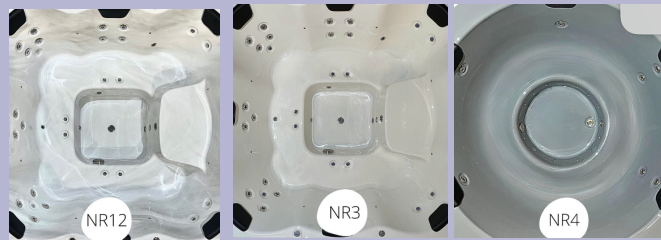


# Design your oasis

All of our models are available to order in a minimum of ten standard classic colour combinations ensuring your new Eco Tub will compliment your garden.

The exterior is treated to last for approximately 7 years with no maintenance. Your tub can be re-treated with Danish Oil to help nourish the cladding, or re-stained (in the same way you would your garden fence or other furniture). The freedom to re-stain your Eco Tub will allow it to remain in keeping with your garden for many years to come.

## American Acrylic Interior



White  
Marbled

Cream

Light  
Grey

*Available across all models with the exception of The Glyme which is not available in White Marbled. The Wilderness has a stainless steel liner.*

## Spruce Exterior



Natural  
Oiled

Oak

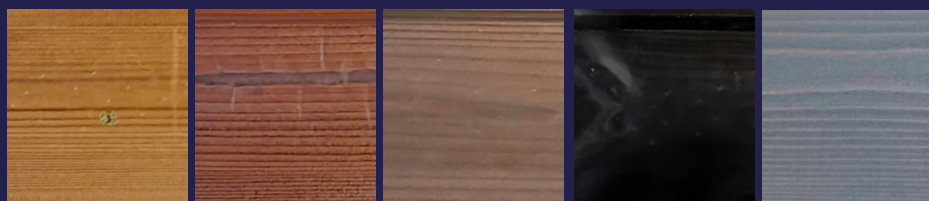
Brown

Black

Light  
Grey

*Standard cladding for The Glyme, The Burford, The Blenheim & The Winchcombe.*

## Thermowood Exterior



Natural  
Oiled

Oak

Brown

Black

Light  
Grey

*Standard cladding for The Wilderness, The Kingham, The Charlbury & The Moreton. Available as an upgrade for all other models.*

A choice of finishes



Bespoke paint finishes  
available, including  
Farrow & Ball.

# A helpful service for our customers

---

We take great pride in our unrivalled combination of luxury design, superior build-quality, excellent customer service & unbeatable prices.



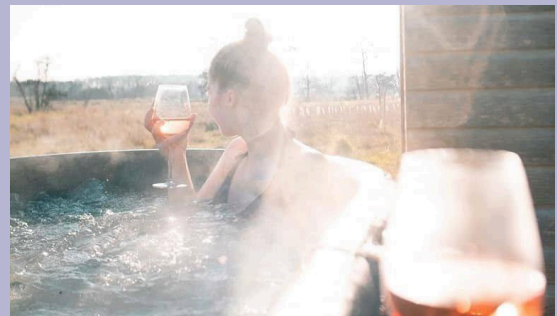
## COMMERCIAL CUSTOMERS

Studies find that properties with a hot tub can make up to 154%\* compared to similar properties without.

Wood-fired hot tubs are perfect in a commercial settings as they allow for quick & simple changeovers in-between guests. We receive strong feedback from our commercial customers that their guests respond really positively to wood-fired hot tubs and enjoy the novelty of relaxing in one.

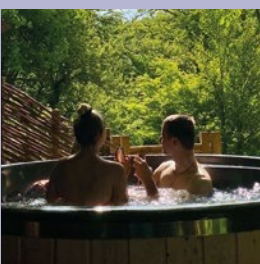
Our tubs help to transform winter occupancy whilst still remaining low maintenance & providing an almost instant return on investment. As all of our tubs have fibreglass or acrylic as standard, cleaning & changeovers remain simple and time-efficient.

\*source: Sykes

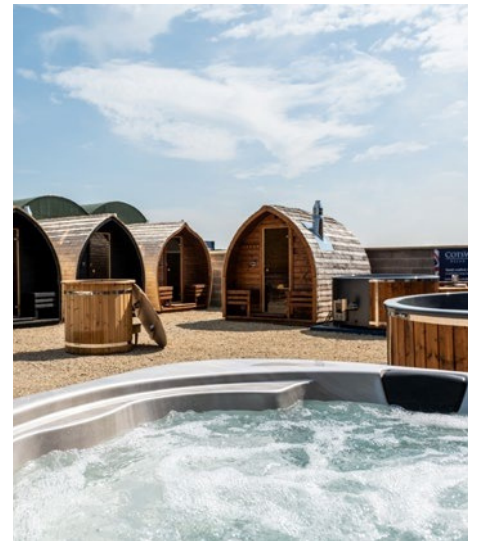


## HELPFUL DEALER ADVICE

We are proud to have the strongest network of wood-fired hot tub dealers in the United Kingdom. Our dealers are all well-established family run companies who are just as passionate, knowledgeable & dedicated as we are in helping customers discover the possibilities for their outdoor living area all year-round.



“We purchased our tub after much research when building our holiday let. We could not be more pleased with it and our guests love it. Our occupancy is over 85% all year and I’m confident that a high proportion of that is down to the tub. Aftercare has been amazing and I highly recommend the team at Cotswold Eco Tubs.”



## About us

---

Established in 2017, we are a UK family-owned business with complete customer satisfaction at the heart of all that we do.

We take great pride in our unrivalled combination of luxury design, superior build-quality, excellent customer service & unbeatable prices.

Our wonderful range of Eco Tubs have been specifically designed & adapted over several years to be perfectly suited for the UK & France markets.

We recognise that when purchasing a hot tub there is a lot to consider. We have a strong network of family-owned showrooms throughout the UK & France where our Eco Tubs are available to view alongside friendly, expert advice.

We are proud to be able to offer international delivery with our Eco Tubs having been shipped to 5 different continents!



### Honest pricing

Very early on in our company journey, we recognised that many of our competitors just priced on the bare components of a hot tub and that once the essentials (along with the luxuries!) were included the quoted cost spiralled.

We found the hidden costs to be both deceptive and frustrating and we made a commitment to ensure that we always priced our Eco Tubs with a generous package as standard.



# COTSWOLD ECO TUBS

RELAX, REPLENISH, REVIVE



## Contact us

If you have any queries, please get in touch with our helpful team

Call: 0333 242 3363

WhatsApp: 07453 382 802

Email: [hello@cotswoldecotubs.co.uk](mailto:hello@cotswoldecotubs.co.uk)

Unit 1, The Greyhounds,  
Bradborough Farm, Southrop, The  
Cotswolds GL7 3PH

[www.cotswoldecotubs.co.uk](http://www.cotswoldecotubs.co.uk)



**Scan here** to find your  
local dealer and prices



RELAX, REPLENISH, REVIVE